

**THE CORPORATION OF THE DISTRICT OF SAANICH**

**BYLAW NO. 10123**

**TO CLOSE TO TRAFFIC AND REMOVE THE HIGHWAY  
DEDICATION FROM A PORTION OF LOCHSIDE DRIVE**

---

WHEREAS the purpose of this bylaw is to close to traffic and remove the highway dedication of a portion of the public highway declared as highway by notice in the Gazette published on or around March 18, 1949, commonly known as Lochside Drive;

AND WHEREAS in accordance with section 40 of the *Community Charter*, The Corporation of the District of Saanich has published notice of its intention to adopt this bylaw, has delivered notice to the operators of utilities whose transmission or distribution facilities or work Council considers will be affected, and has provided an opportunity for persons who consider they are affected to make representations to Council;

NOW THEREFORE, The Municipal Council of The Corporation of the District of Saanich in open meeting assembled enacts as follows:

1. This bylaw may be cited for all purposes as the **“ROAD CLOSURE AND HIGHWAY DEDICATION REMOVAL BYLAW (LOCHSIDE DRIVE), 2025, NO.10123.”**
2. For purposes of this bylaw, **“Road Closure Area”** means that portion of the public highway declared as highway by notice in the Gazette on or around March 18, 1949, comprising of .263ha, more or less, shown on Reference Plan EPP143807 a reduced copy of which is attached to this bylaw as Schedule “A”.
3. The Road Closure Area is hereby closed to all types of traffic.
4. The dedication of the Road Closure Area as a public highway is hereby removed.

Read the first time this 5<sup>th</sup> day of May, 2025.

Read the second time this 5<sup>th</sup> day of May, 2025.

Read the third time this 5<sup>th</sup> day of May, 2025.

Adopted by Council, signed by the Mayor and Corporate Officer and sealed with the Seal of the Corporation on the       day of       , 2025.

---

Corporate Officer

---

Mayor

REFERENCE PLAN TO ACCOMPANY BYLAW No. 10123  
(CORPORATION OF THE DISTRICT OF SAANICH),  
TO CLOSE PART OF LOCHSIDE DRIVE, BEING PART OF LOT 47, PLAN 721 LYING  
WITHIN THE BOUNDARIES OF PLAN 1 RW, SECTION 32, VICTORIA DISTRICT,  
GAZETTED AS ROAD ON MARCH 18, 1949.

PLAN EPP143807

BCGS 92B.044  
PURSUANT TO SECTION 120 OF THE LAND TITLE ACT  
AND SECTION 40 OF THE COMMUNITY CHARTER

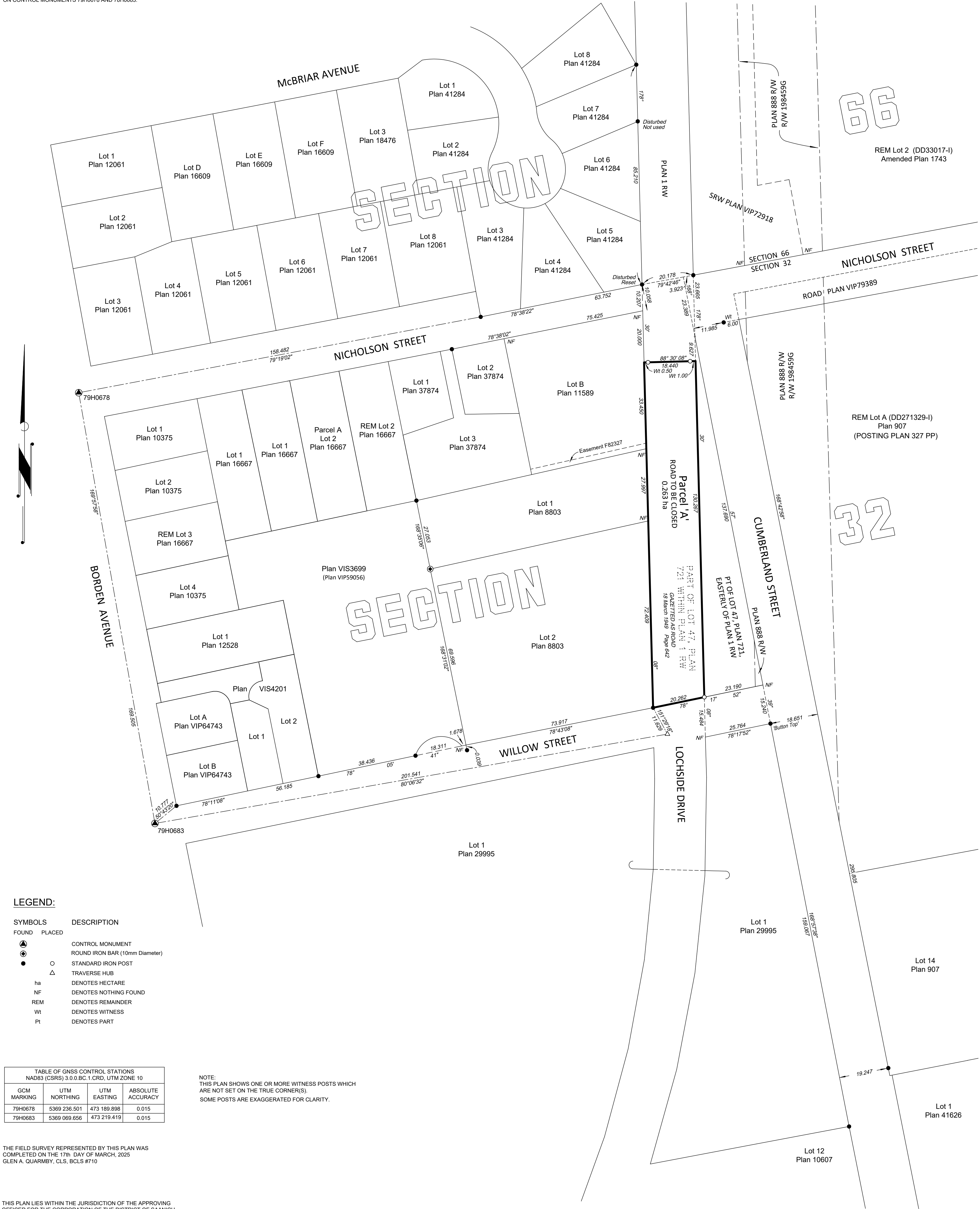


ALL DISTANCES ARE IN METRES AND DECIMALS THEREOF

THE INTENDED PLOT SIZE OF THIS PLAN IS 560 mm IN WIDTH BY  
864 mm IN HEIGHT (D-SIZE) WHEN PLOTTED AT A SCALE OF 1:750

GRID BEARINGS ARE DERIVED FROM OBSERVATIONS BETWEEN GEODETTIC  
CONTROL MONUMENTS 79H0678 AND 78H0683 AND ARE REFERRED TO THE  
CENTRAL MERIDIAN OF UTM ZONE 10 (123° WEST LONGITUDE)

THE UTM COORDINATES AND ESTIMATED ABSOLUTE ACCURACY ACHIEVED  
ARE DERIVED FROM THE MASCOT PUBLISHED COORDINATES AND STANDARD  
DEVIATIONS FOR GEODETTIC CONTROL MONUMENTS 79H0678 AND 78H0683.  
THIS PLAN SHOWS HORIZONTAL GROUND-LEVEL DISTANCES, UNLESS  
OTHERWISE SPECIFIED. TO COMPUTE GRID DISTANCES, MULTIPLY  
GROUND-LEVEL DISTANCES BY THE AVERAGE COMBINED FACTOR OF  
0.99960615. THE AVERAGE COMBINED FACTOR HAS BEEN DETERMINED BASED  
ON CONTROL MONUMENTS 79H0678 AND 78H0683.



LEGEND:

SYMBOLS	DESCRIPTION
FOUND	PLACED
	CONTROL MONUMENT
	ROUND IRON BAR (10mm Diameter)
	STANDARD IRON POST
	TRAVERSE HUB
ha	DENOTES HECTARE
NF	DENOTES NOTHING FOUND
REM	DENOTES REMAINDER
Wt	DENOTES WITNESS
Pt	DENOTES PART

TABLE OF GNSS CONTROL STATIONS NAD83 (CSRS) 3.0.0.BC.1.CRD, UTM ZONE 10			
GCM MARKING	UTM NORTHING	UTM EASTING	ABSOLUTE ACCURACY
79H0678	5369 236.501	473 189.898	0.015
79H0683	5369 069.656	473 219.419	0.015

NOTE:  
THIS PLAN SHOWS ONE OR MORE WITNESS POSTS WHICH  
ARE NOT SET ON THE TRUE CORNER(S).  
SOME POSTS ARE EXAGGERATED FOR CLARITY.

THE FIELD SURVEY REPRESENTED BY THIS PLAN WAS  
COMPLETED ON THE 17th DAY OF MARCH, 2025  
GLEN A. QUARMBY, CLS, BCLS #710

THIS PLAN LIES WITHIN THE JURISDICTION OF THE APPROVING  
OFFICER FOR THE CORPORATION OF THE DISTRICT OF SAANICH

THIS PLAN LIES WITHIN THE CAPITAL REGIONAL DISTRICT



DISTRICT OF SAANICH 1040 MCKENZIE AVE  
VICTORIA, BC V8P 2L4

ECR No. 291840 DATE: 7 MAY 2025  
FILE: DOS PARKS YARD.DWG